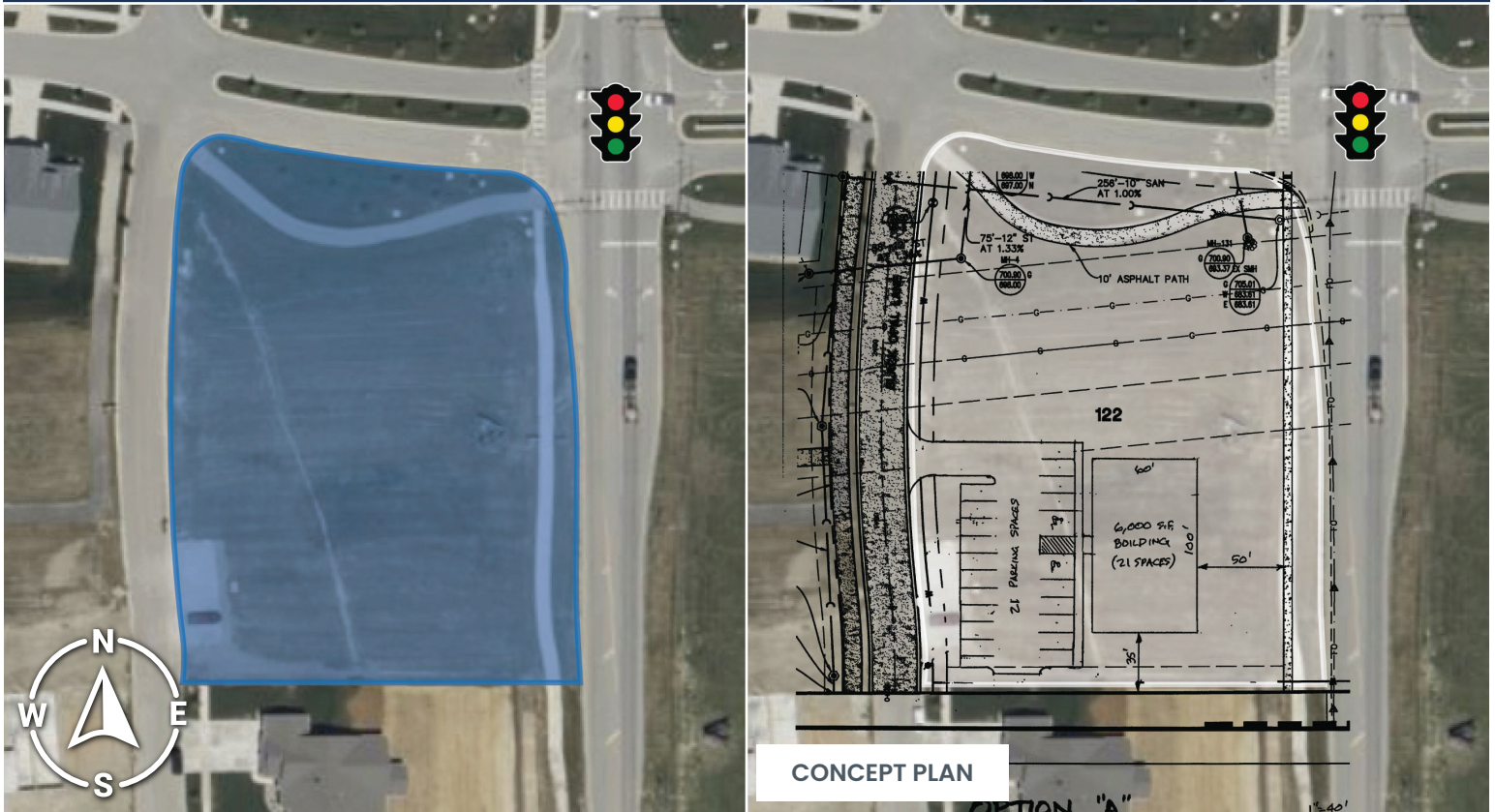


# AVAILABLE

## Commercial Property



10499 Black Opal Ln, St John, IN 46373

### Property Overview

Vacant parcel in a growing community.

### Property Highlights

- Approximately 1.4 acres of commercial land available on the Southwest side of Saint John
- Prominent location on Calumet Ave
- Direct access to municipal water, sewer, natural gas, electric, broadband fiber
- Zoned C1
- Professional Offices, Retail Stores, Etc.

### SITE DATA

Net Acreage:	1.39
Net Sq. Ft	60,548.40
Market	Lake County

Demographics	3 Miles	5 Miles	10 Miles
Total Population	40,031	127,338	433,235
Median HH Income	\$80,560	\$68,706	\$58,307



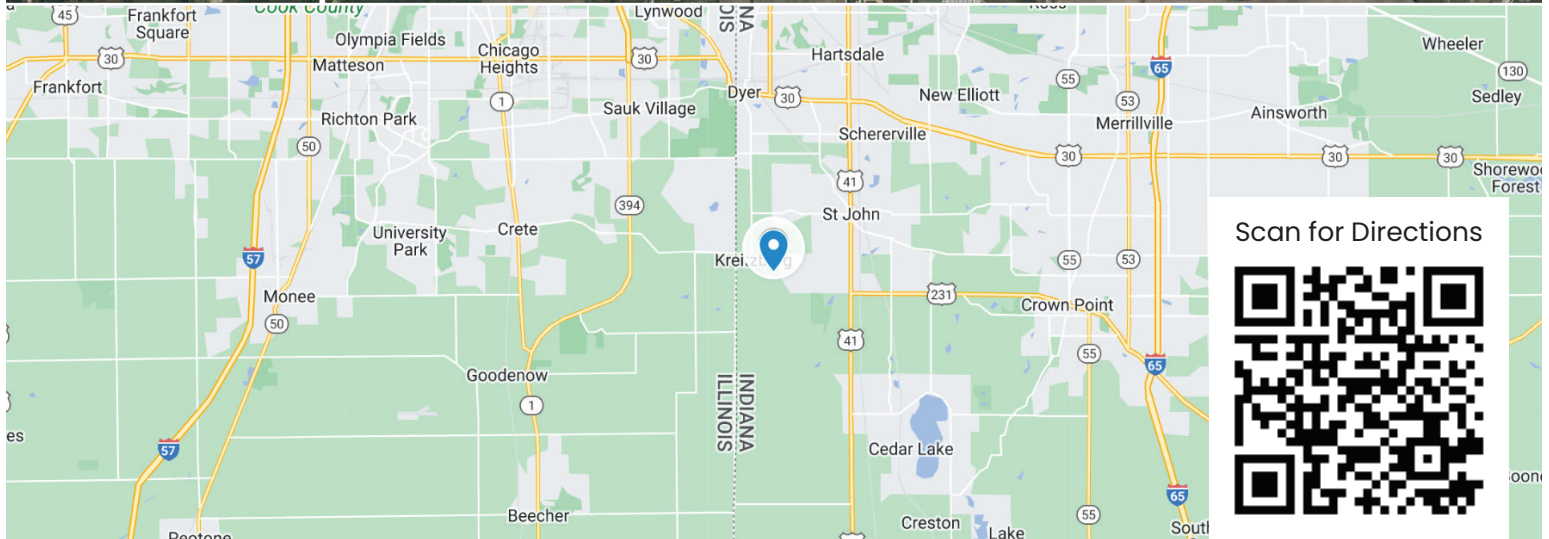
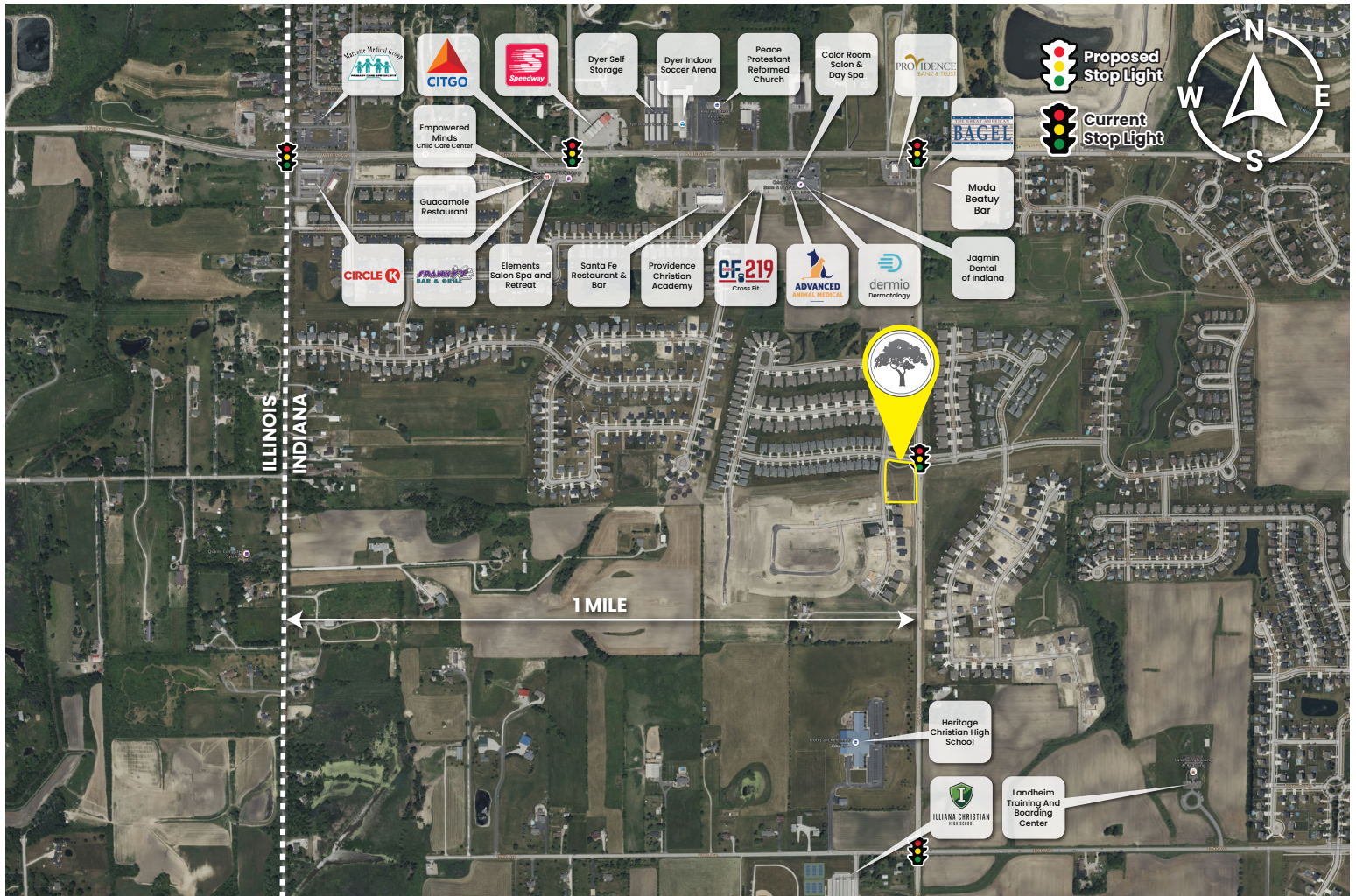
**SCHILLING**  
REAL ESTATE

**219.365.6000**  
SchillingRealEstate.com



## Property Info

10499 Black Opal Ln, St John, IN 46373



Scan for Directions

**SCHILLING**  
REAL ESTATE**219.365.6000**  
SchillingRealEstate.com