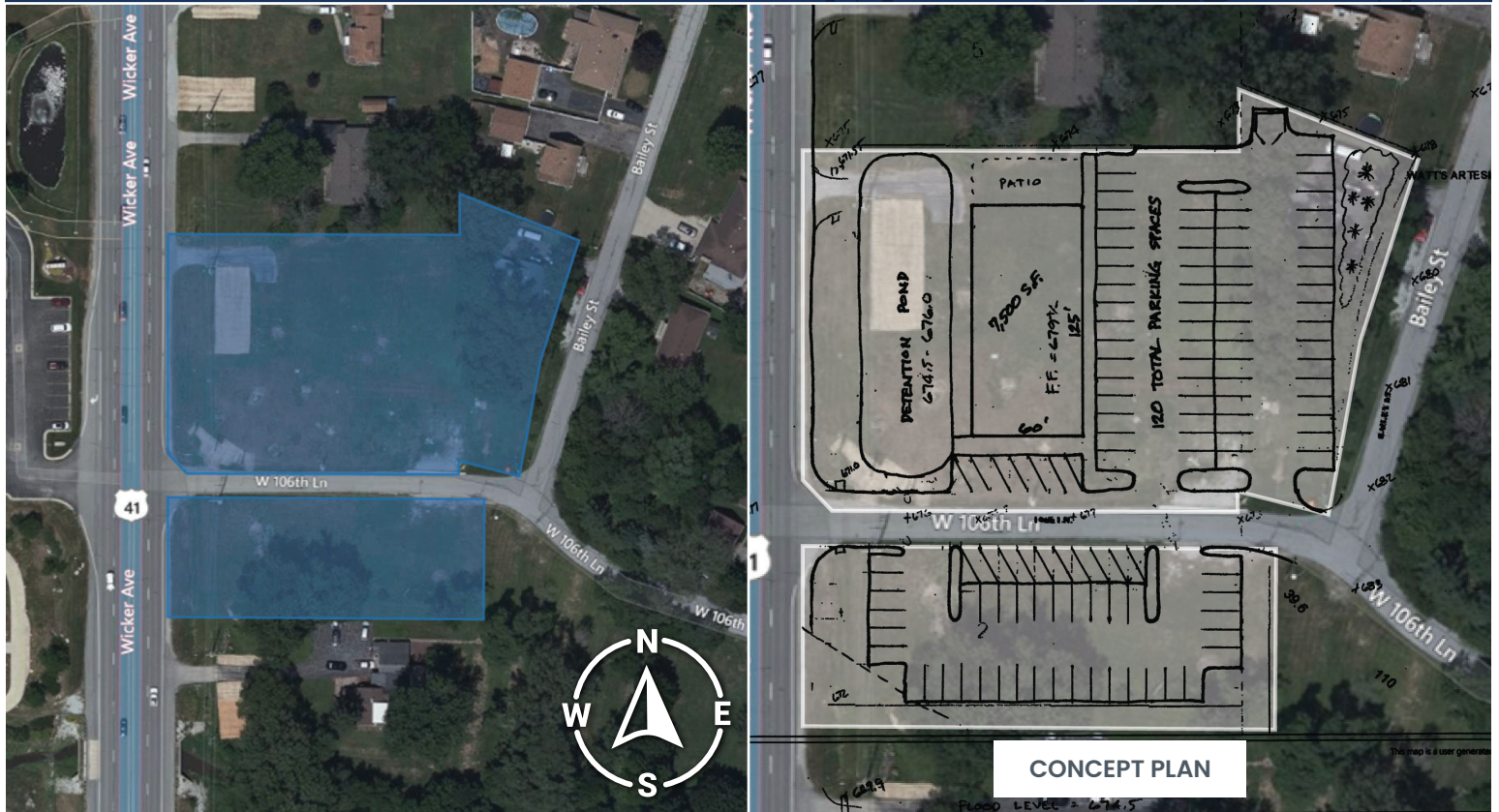


AVAILABLE

Commercial Property



10637 Wicker Ave, St John, IN 46373

Property Overview

Vacant parcel in a growing community.

- **Property Highlights**
- Approximately 2 acres of commercial land available on the Southeast side of Saint John
- Prominent location on US 41
- Direct access to municipal water, sewer, natural gas, electric, broadband fiber
- Zoned C1 (General Commercial District)
- Upscale Restaurant, Office, Stores, etc.
- Liquor License Available
- Located in a Tax Increment Finance district

SITE DATA

Net Acreage:	1.71		
Net Sq. Ft	74,487.60		
Market	Lake County		
Traffic Count	27,025 VPD		
Demographics	3 Miles	5 Miles	10 Miles
Total Population	59,511	135,711	397,134
Median HH Income	\$77,660	\$70,086	\$57,541

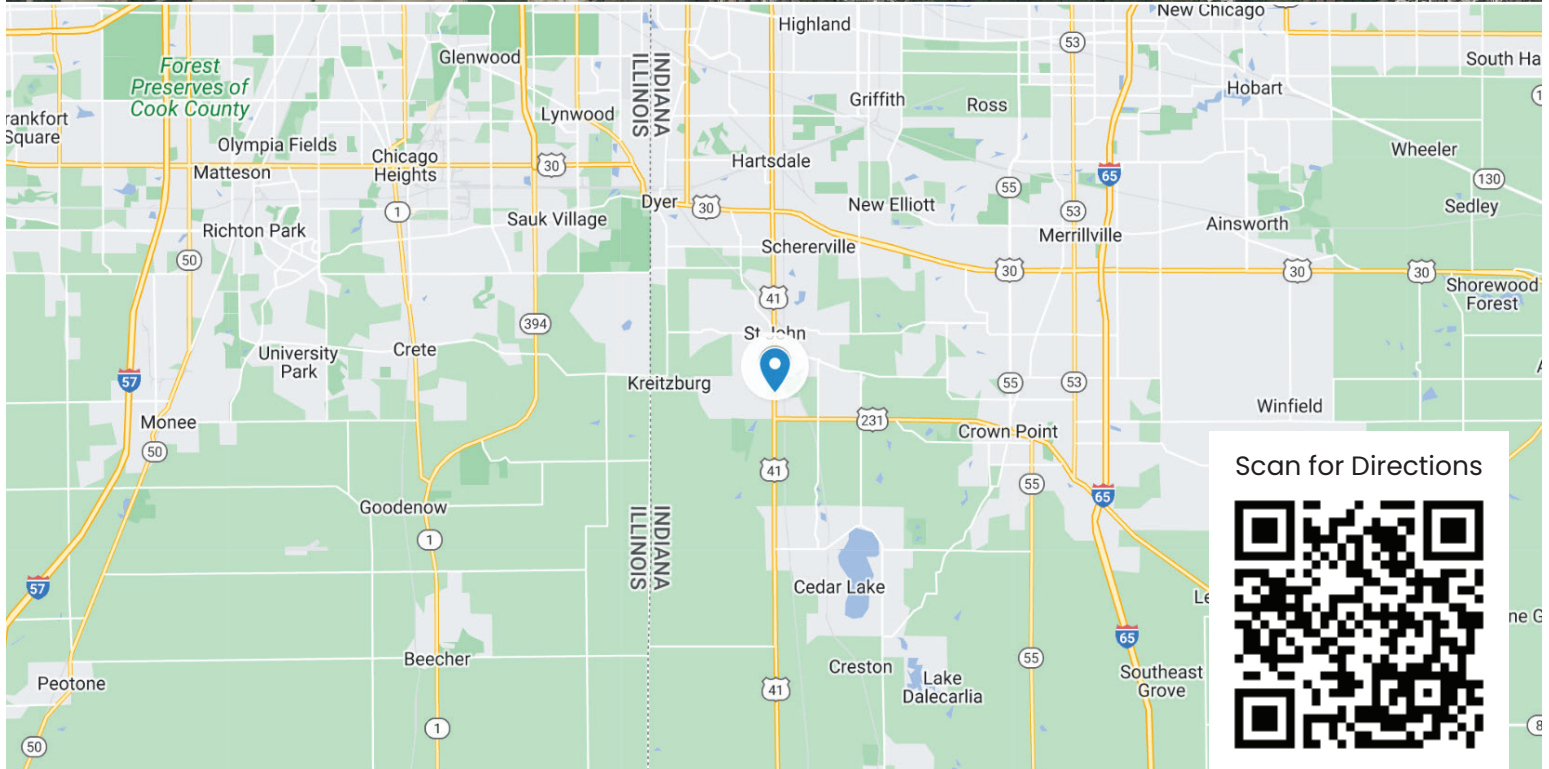
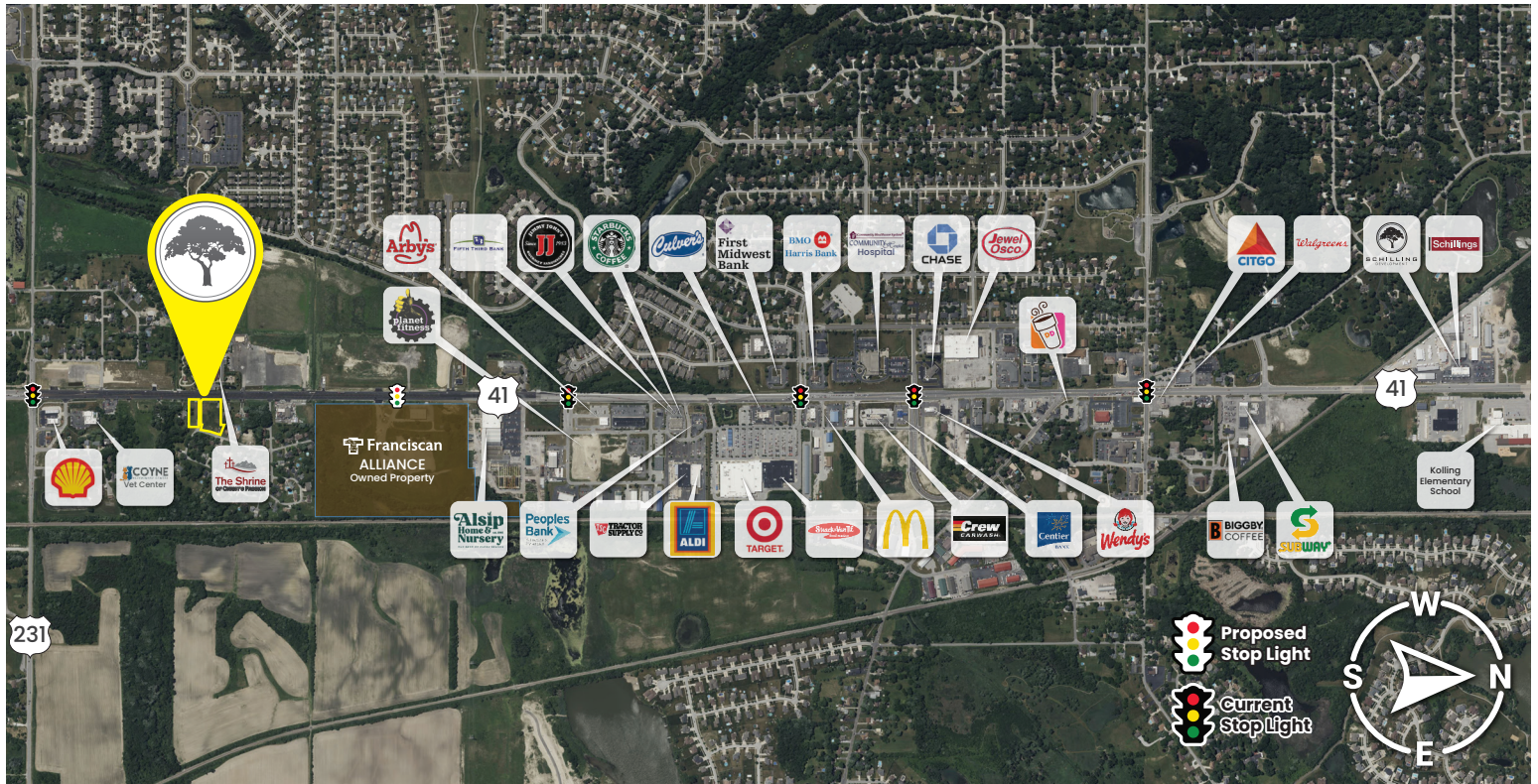


SCHILLING
REAL ESTATE

219.365.6000
SchillingRealEstate.com

Property Info

10637 Wicker Ave, St John, IN 46373

**SCHILLING**
REAL ESTATE**219.365.6000**
SchillingRealEstate.com