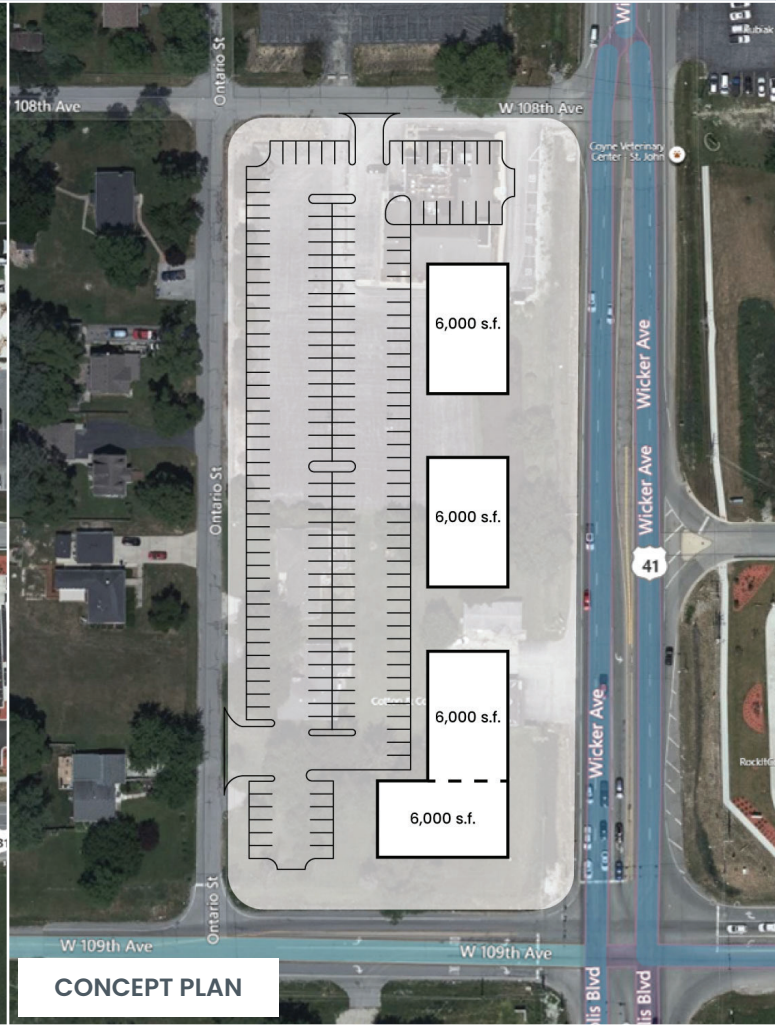
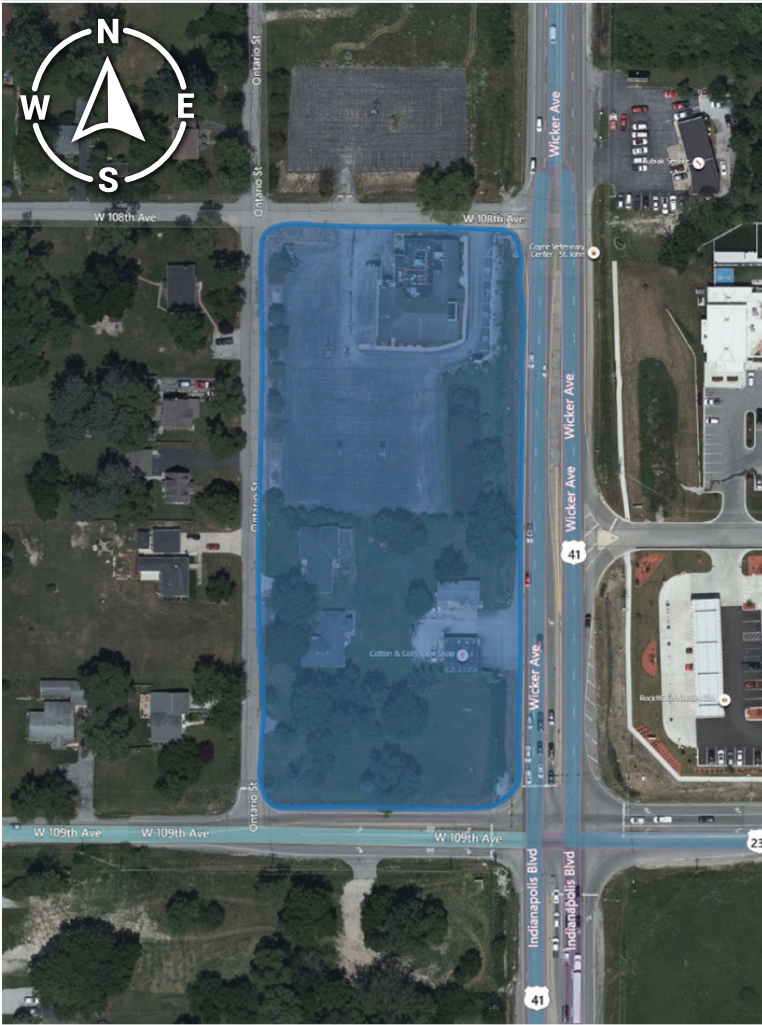


# AVAILABLE

## Commercial Property



### 10808 Wicker Ave, St John, IN 46373

#### Property Overview

High visibility corner parcel.

#### Property Highlights

- Approximately 4 acres of commercial land available on the Southwest side of Saint John
- Prominent location on US 41
- Direct access to municipal water, sewer, natural gas, electric, broadband fiber
- Zoned C2 (Highway Commercial District)
- Upscale Restaurant, Office, Stores, etc.
- Liquor Licenses Available
- Located in a Tax Increment Finance district

#### SITE DATA

Net Acreage:	3.94		
Net Sq. Ft	171,626.40		
Market	Lake County		
Traffic Count	21,860 VPD		
<b>Demographics</b>	<b>3 Miles</b>	<b>5 Miles</b>	<b>10 Miles</b>
Total Population	59,511	135,711	397,134
Median HH Income	\$77,660	\$70,086	\$57,541



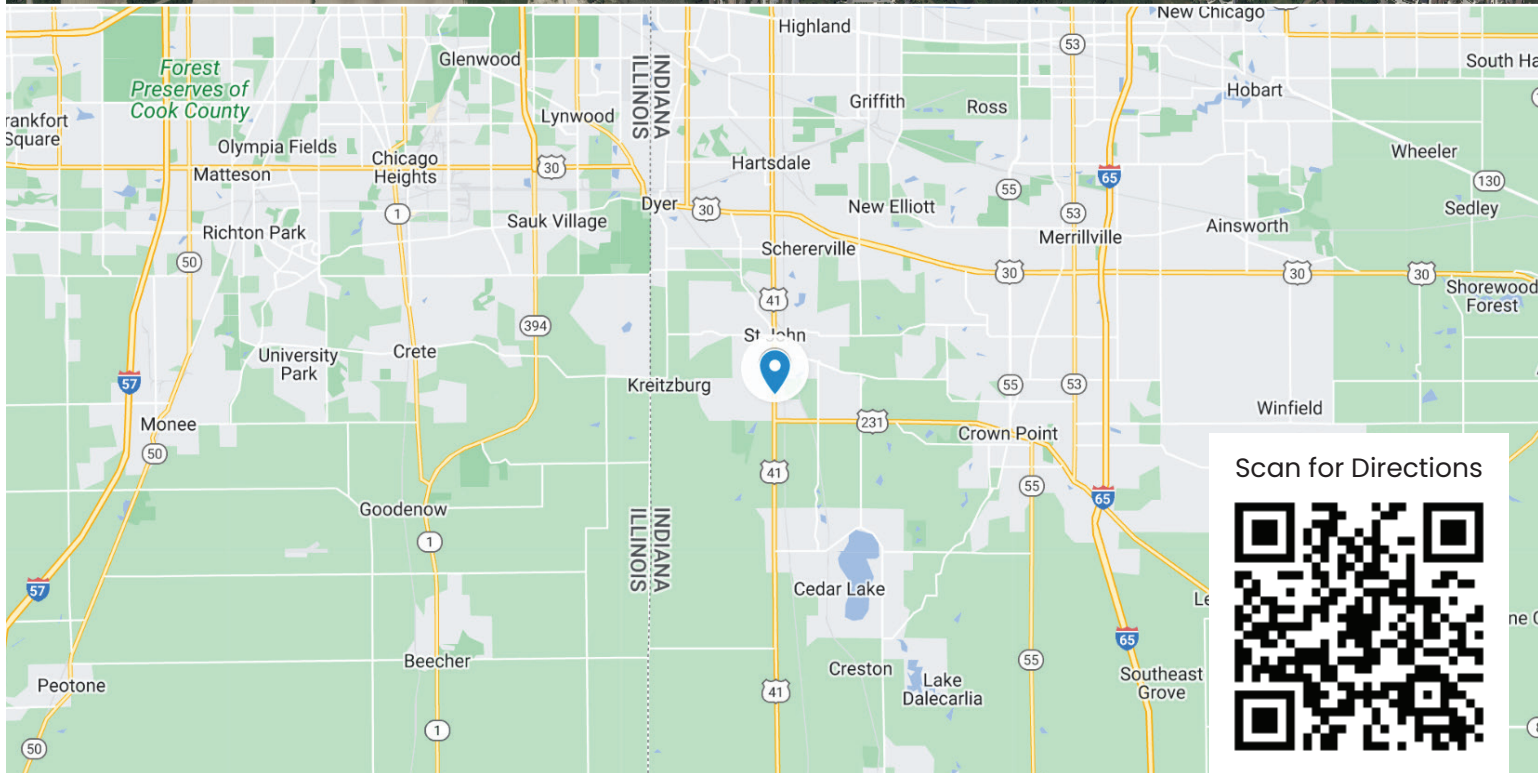
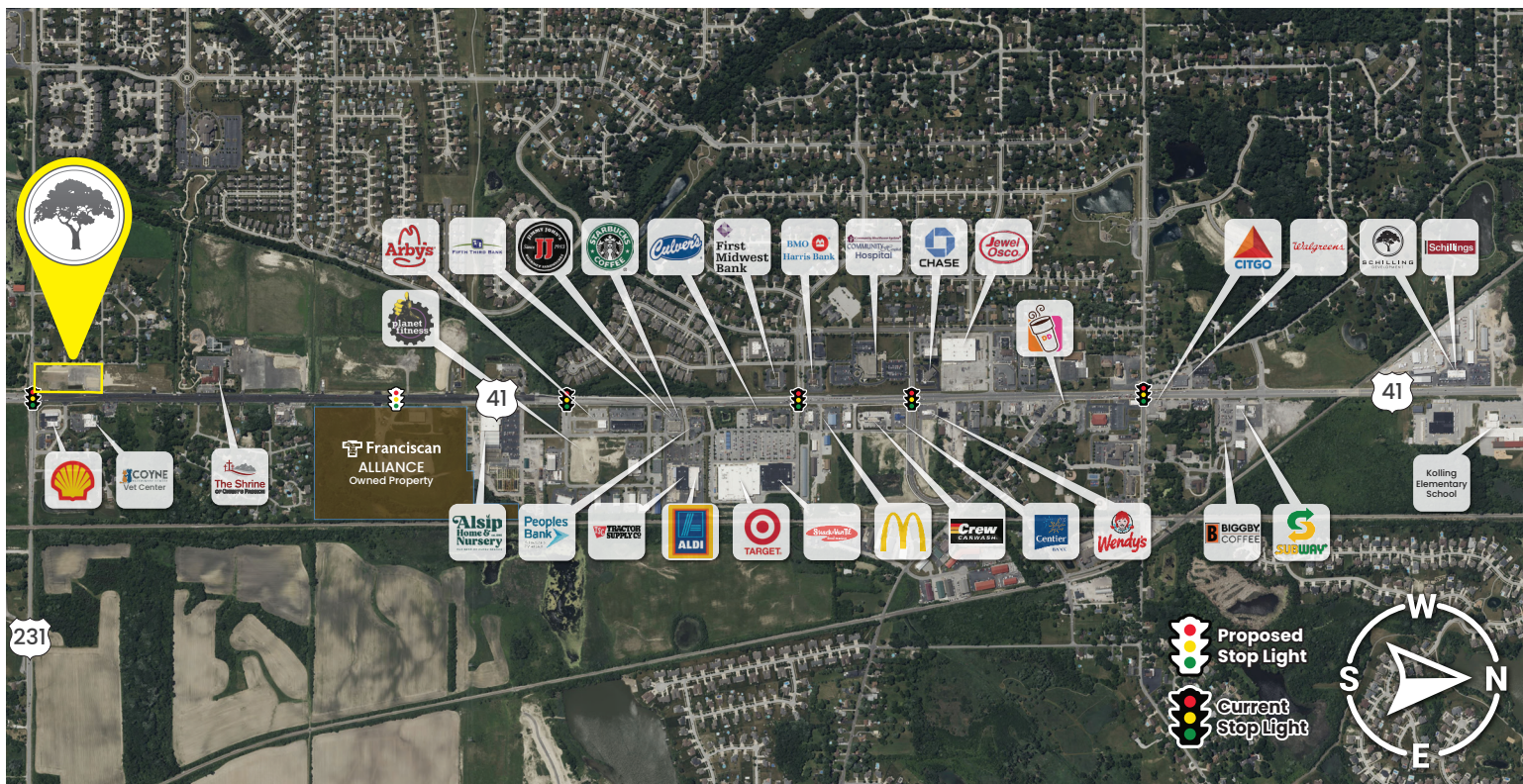
**SCHILLING**  
REAL ESTATE

**219.365.6000**  
SchillingRealEstate.com



# Property Info

## 10808 Wicker Ave, St John, IN 46373



Scan for Directions



**SCHILLING**  
REAL ESTATE

**219.365.6000**  
SchillingRealEstate.com