

AVAILABLE

Commercial Property



CONCEPT PLAN

11216 W 107th Pl, St John, IN 46373

Property Overview

Large vacant parcel in a growing community.

Property Highlights

- Approximately 12 acres of commercial land available on the Southwest side of Saint John
- Prominent location on US 41
- Direct access to municipal water, sewer, natural gas, electric, broadband fiber
- Zoned C2 (Highway Commercial District)
- Upscale Restaurant, Office, Stores, etc.
- Liquor Licenses Available
- Located in a Tax Increment Finance district

SITE DATA

Net Acreage:	6.25
Net Sq. Ft	272,250.00
Market	Lake County
Traffic Count	21,860 VPD

Demographics	3 Miles	5 Miles	10 Miles
Total Population	59,511	135,711	397,134
Median HH Income	\$77,660	\$70,086	\$57,541

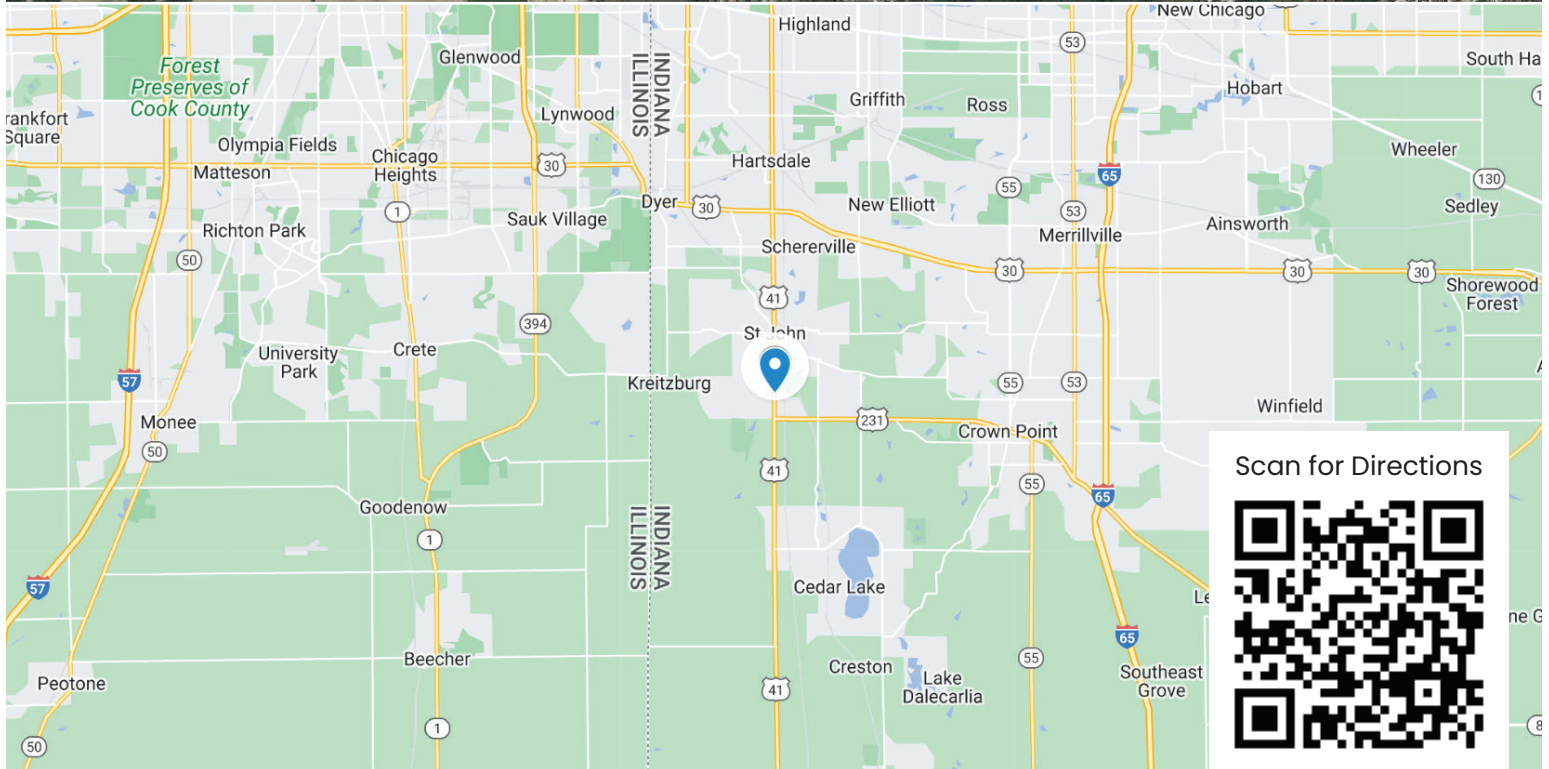
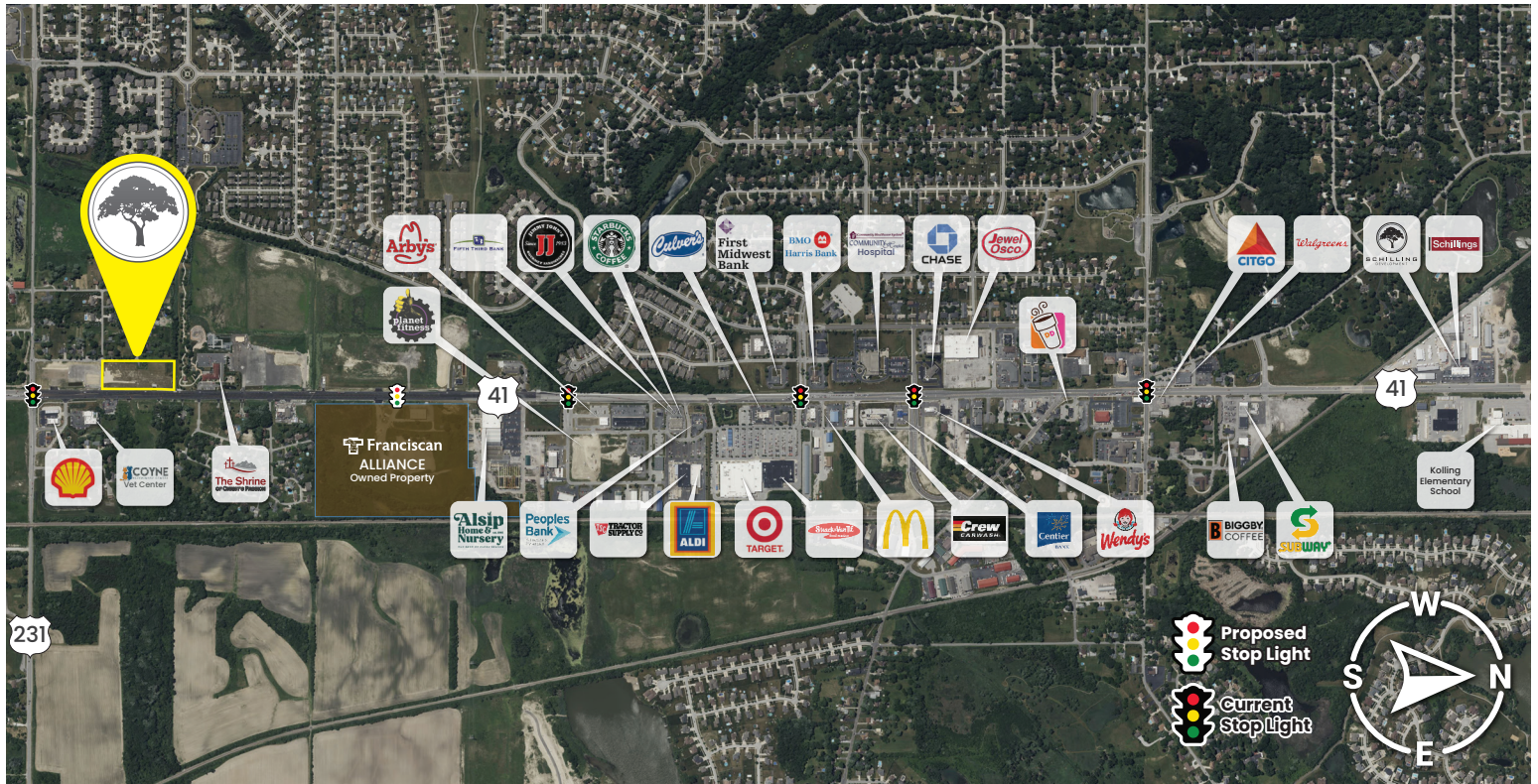


SCHILLING
REAL ESTATE

219.365.6000
SchillingRealEstate.com

Property Info

11216 W 107th Pl, St John, IN 46373

**SCHILLING**
REAL ESTATE**219.365.6000**
SchillingRealEstate.com