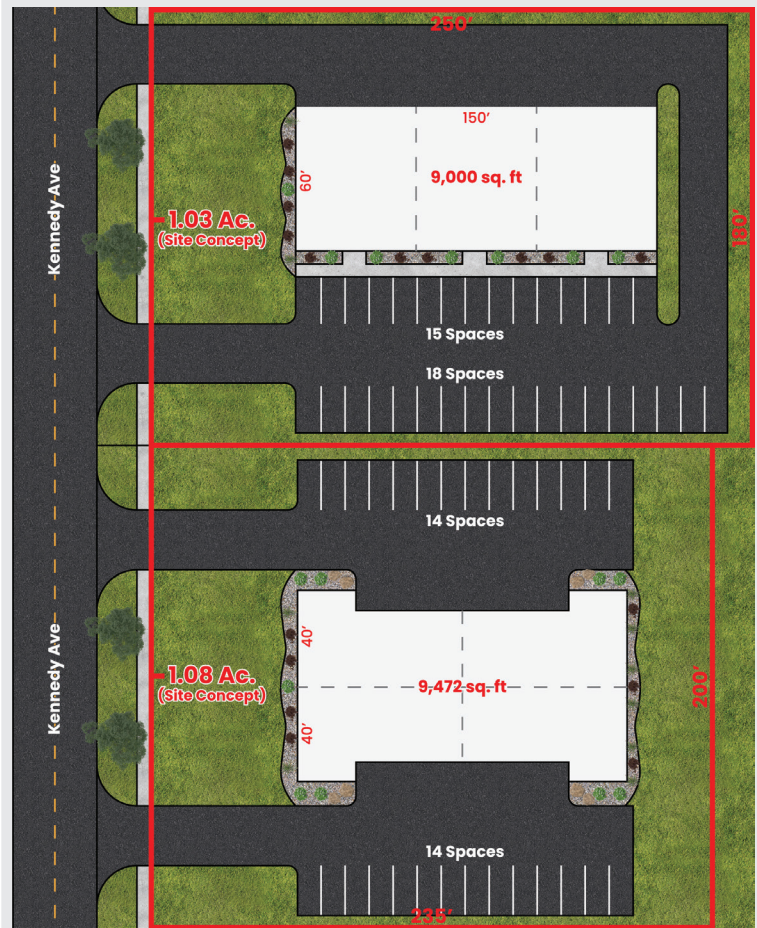


AVAILABLE LOTS

Business Park (Future Project)



SITE CONCEPTS

10698 Joliet St, St John, IN 46373

Property Overview

Large vacant parcel in a growing community.

Property Highlights

- Approximately 62 acres of industrial land available on the east side of Saint John
- Prominent location on Joliet St.
- Direct access to municipal water, sewer, natural gas, electric, broadband fiber
- Zoned I-1 (Industrial)
- Business sites, professional office, restaurants, etc.
- Liquor Licenses Available
- Located in a Tax Increment Finance district

SITE DATA

Net Acreage:	62.55
Net Sq. Ft	2,724,678
Market	Lake County
Traffic Count	5,207 VPD

Demographics	3 Miles	5 Miles	10 Miles
Total Population	71,125	154,484	442,157
Median HH Income	\$77,583	\$67,833	\$55,463

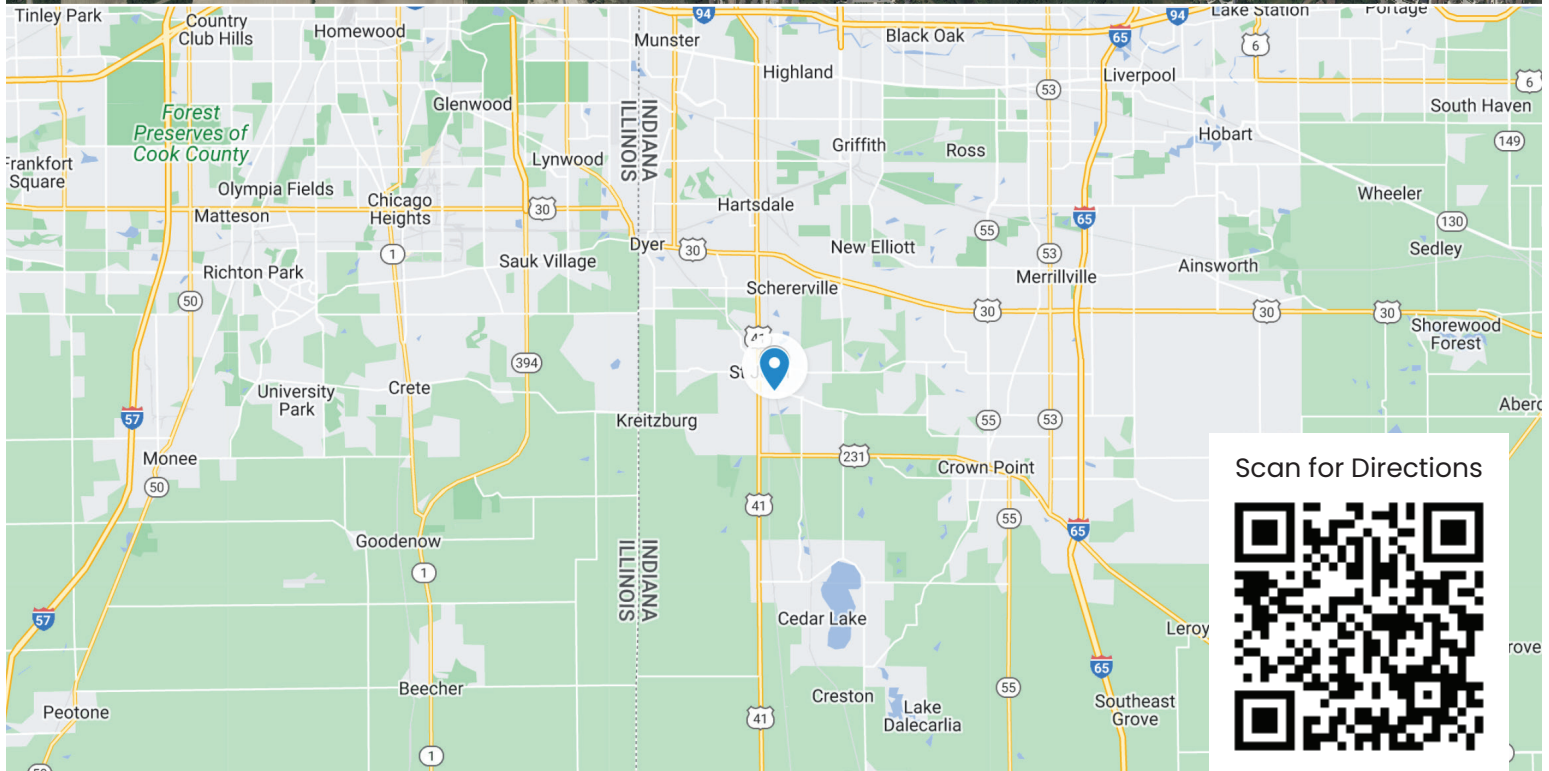
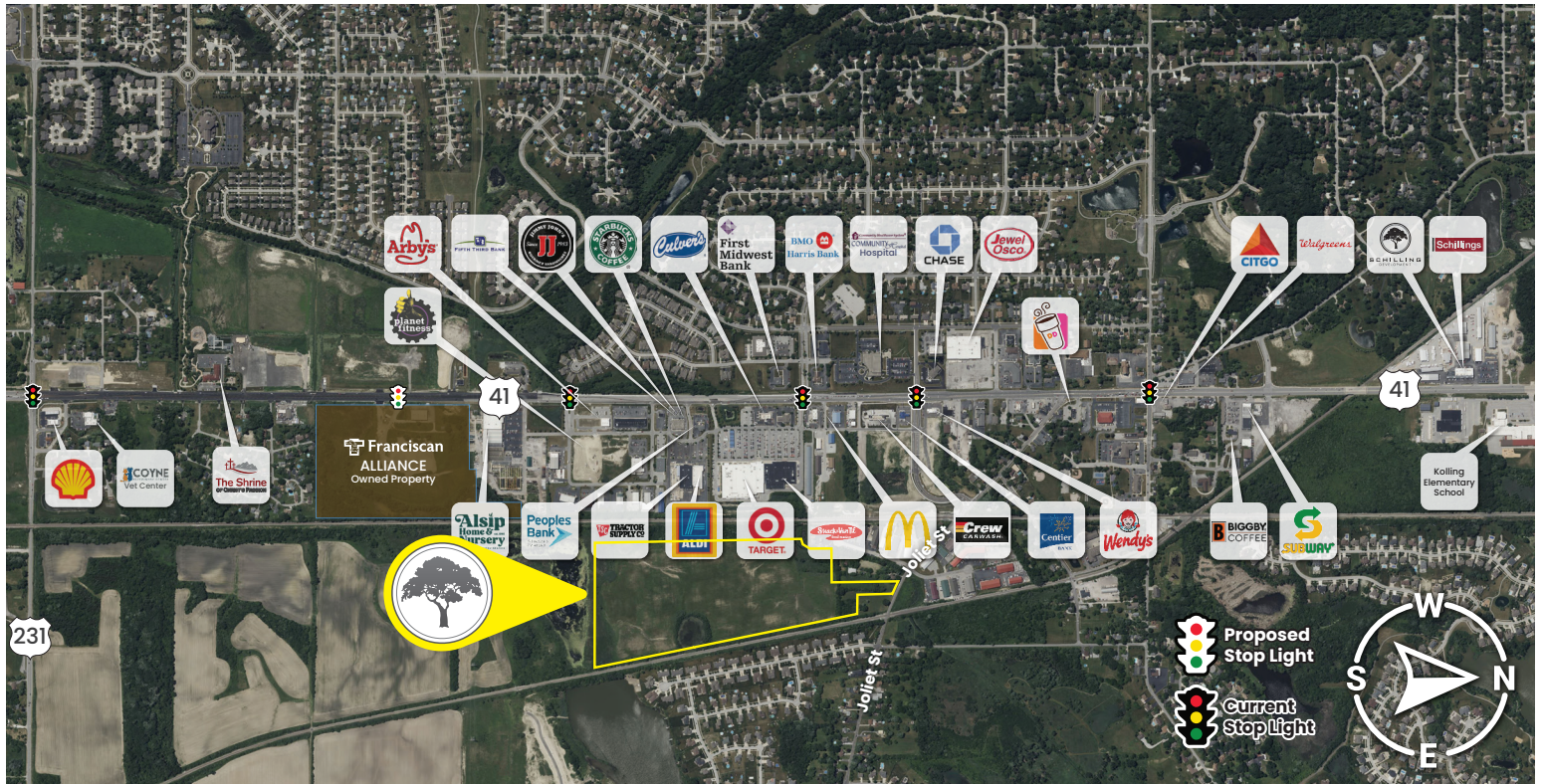


SCHILLING
REAL ESTATE

219.365.6000
SchillingRealEstate.com

Property Info

10698 Joliet St, St John, IN 46373



Scan for Directions

**SCHILLING**
REAL ESTATE**219.365.6000**
SchillingRealEstate.com